



A Powerful Tool for Response to Intervention

i-Ready was designed to make classrooms better places for teachers and students. Streamline your Response to Intervention (RTI) efforts and help your students succeed with this integrated system of adaptive assessments, instructional resources, individualized online instruction, and reliable progress monitoring tools.



i-Ready meets all our required components of RTI, making it unnecessary for our staff to search all over for effective intervention materials.

—Elementary School Principal, LA



Streamline Your RTI Efforts with *i-Ready*

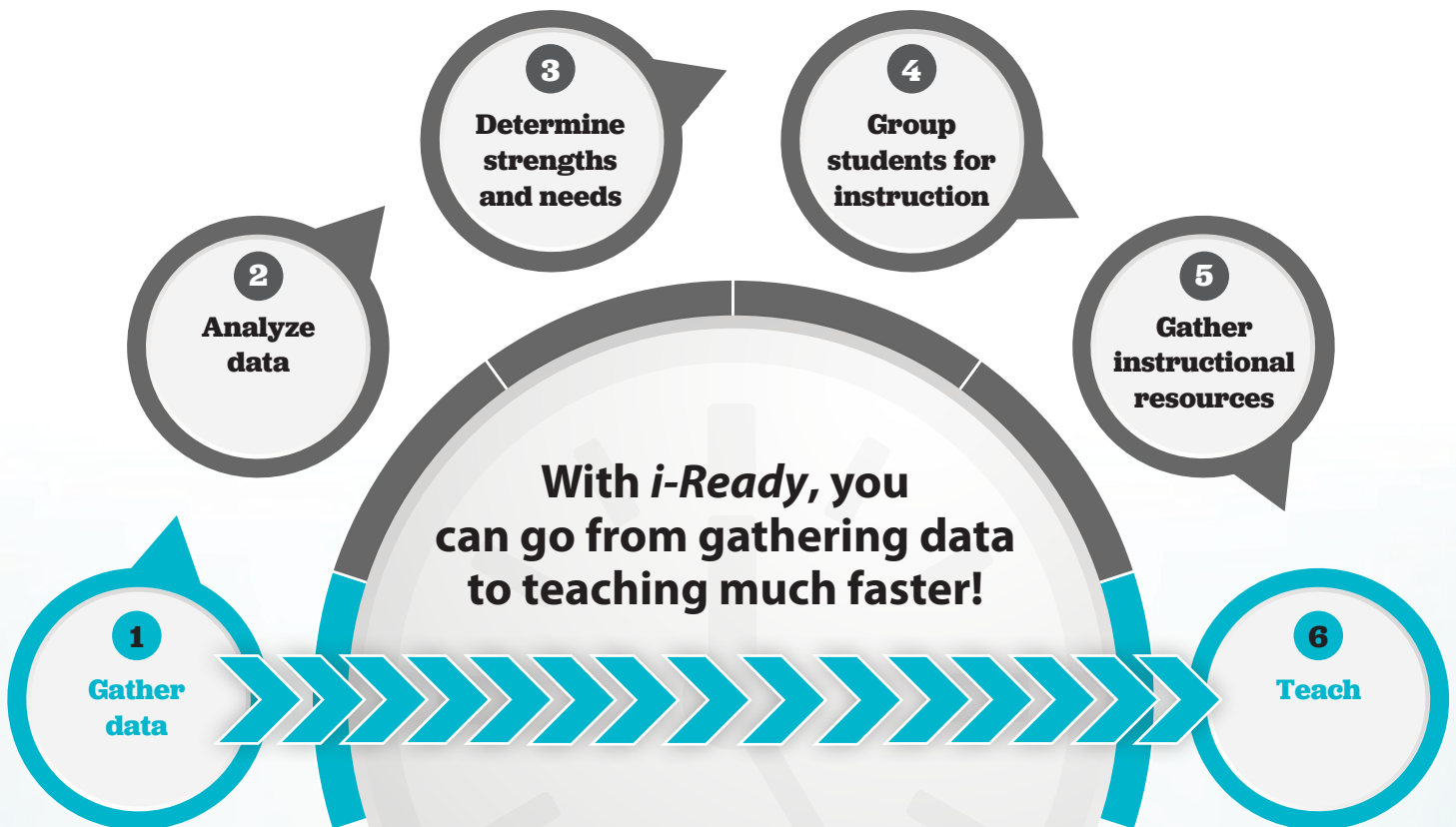
As an educational partner to thousands of districts across the United States, Curriculum Associates knows that RTI models differ from state to state and even from district to district. Our products aren't designed as a "one-size-fits-all" solution. Instead, *i-Ready* is a flexible tool that K–8 educators use to customize RTI experiences based on the academic needs of their students.

Whether you're looking to improve grade-level outcomes or target interventions for an individual student, *i-Ready's* adaptive assessment and easy-to-use reports streamline the RTI process. By linking diagnostic data to instructional next steps, *i-Ready* reduces the need for multiple tests and eliminates time-consuming steps in the instructional planning process.

What is RTI?

According to the RTI Action Network, RTI is "a multi-tier approach to the early identification and support of students with learning and behavior needs. The RTI process begins with high-quality instruction and universal screening of all children in the general education classroom."

Source: RTINetwork.org/Learn/What/WhatIsRTI



Streamline testing time:
i-Ready provides a single, adaptive assessment that screens for multiple competencies to determine eligibility for RTI Tier 1, 2, and 3 instruction.

Customize instruction:
i-Ready identifies strengths and weaknesses to help teachers determine priority domains for teaching, reteaching, and remediation.

Monitor every student's path to proficiency:
Instantly available, easy-to-use reports show student performance data at the student, classroom, grade, school, and district level.



i-Ready Diagnostic: A Universal RTI Screener for Grades K–8

Determines eligibility for supplemental and intensive supports

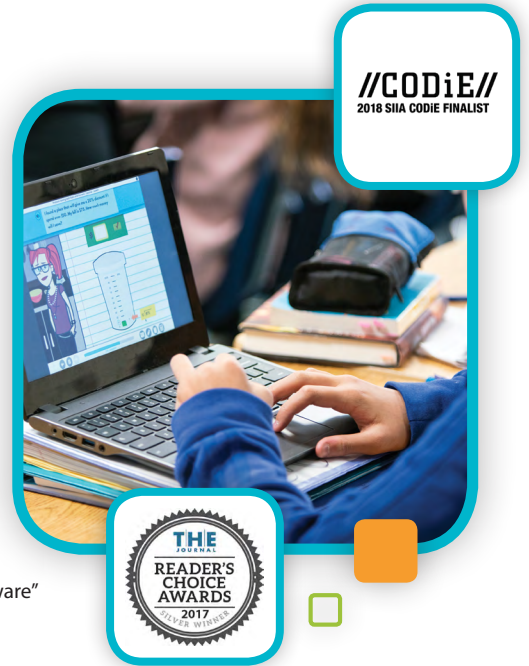
- The National Center on Intensive Intervention (NCII) has given *i-Ready Diagnostic* high ratings as an academic screening tool. This means you can confidently use our data to identify students in need of additional support, including those students in need of RTI Tier 3 instruction.
- Because *i-Ready Diagnostic* provides universal RTI screening, it eliminates the need for redundant tests.

Award-Winning Instruction

Links data to strategic instruction

- Powered by the data from the *i-Ready Diagnostic*, *i-Ready Instruction* provides students with individualized online instruction designed to help all students access grade-level content.
- Instructional Groupings reports include recommended actions for teacher-led, differentiated, whole class instruction, small group supplemental support, and one-to-one instruction for intensive intervention.

2019 EdTech Leadership Award Finalist for “Adaptive Technology Solution”
 2018 CODiE Award Finalist for “Best Mathematics Instructional Solution”
 2017 *THE Journal* Readers’ Choice Silver Award for “Favorite Math Intervention & Remediation Software”



Progress Monitoring

Measures students’ progress toward proficiency

- For both Reading and Mathematics, *i-Ready Diagnostic* and *i-Ready Growth Monitoring* received high ratings as a valid and reliable academic progress monitoring tool by NCII.
- *i-Ready's* tech-enhanced tools allow educators to monitor student progress in a number of different ways:
 - **Global progress monitoring** measures change over time and informs educators if students are benefitting from instruction. This type of progress monitoring is designed to meet most districts’ RTI requirements.
 - **Ongoing progress monitoring** utilizes a variety of standardized and non-standardized measures, including curricular materials, at frequent intervals as part of regular instruction.



Assessment Data, Engaging Instruction—One Proven Program

In compliance with many state and district RTI models, the following features and resources have been combined into one easy-to-use dashboard:

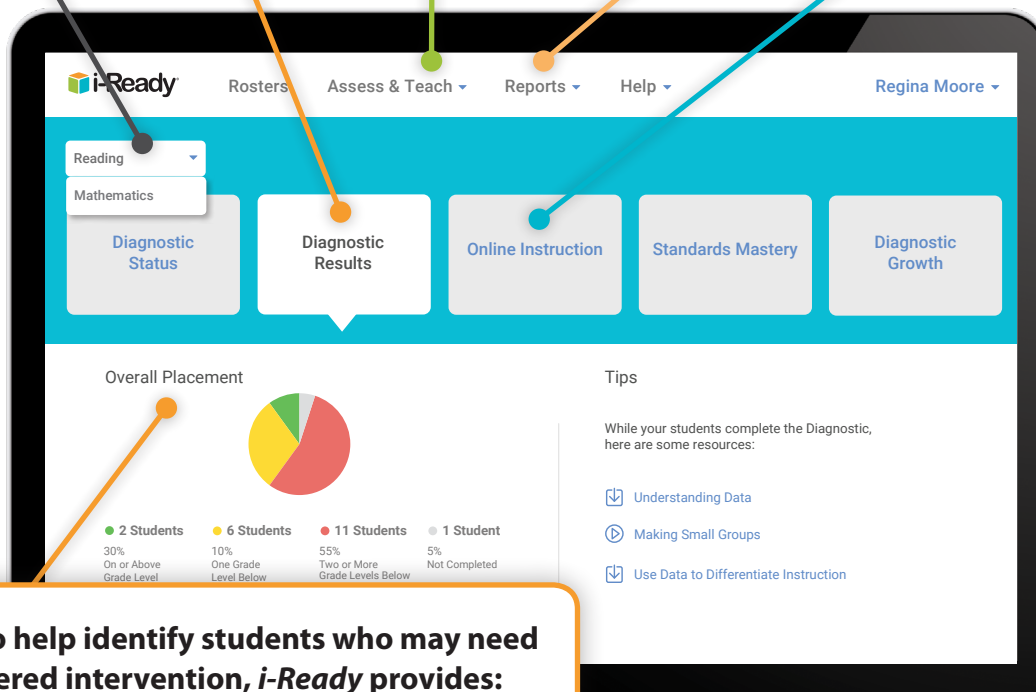
Both Reading and Mathematics

Universal RTI Screener

Differentiated Instructional Resources

Progress Monitoring

Personalized Online Instruction



To help identify students who may need tiered intervention, *i-Ready* provides:

- ✓ **Grade-Level Placements**
- ✓ **National Percentile Ranks**
- ✓ **Lexile® and Quantile® Measures**

See It in Action!

Learn more about *i-Ready's* award-winning instruction at [i-Ready.com/Tour](https://www.i-ready.com/Tour).



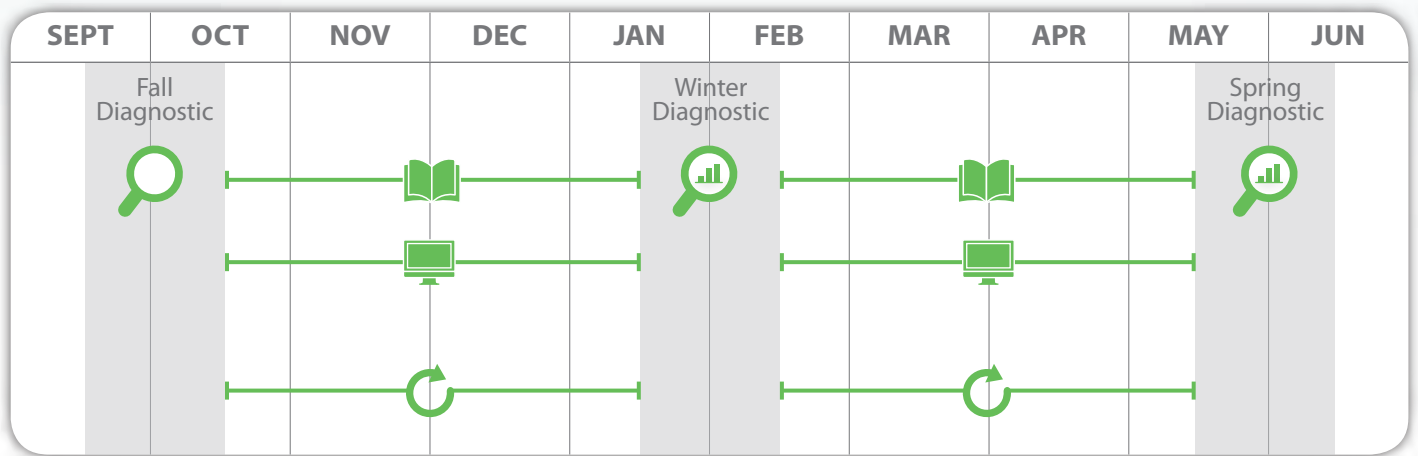
Lexile® and Quantile® measures are registered trademarks of MetaMetrics, Inc. and are registered in the United States and abroad. Copyright © 2019 MetaMetrics, Inc. All rights reserved.

© 2019 Curriculum Associates, LLC. All rights reserved.



Sample Implementation Calendar for RTI Tier 1

This is a sample RTI implementation calendar that may be appropriate for many districts' approaches to RTI. *i-Ready* offers flexibility so your district can build a program based on your specific accountability requirements and RTI needs.



In many districts, RTI Tier 1 universal screening, instruction, and monitoring include:

Universal RTI Screening



All students take the *i-Ready Diagnostic* three times annually in the fall, winter, and spring. Diagnostic Results reports are used to help determine student eligibility for RTI Tier 1, 2, and 3 instruction in reading and mathematics using criterion-referenced Grade-Level Placements and national percentile ranks.

Differentiated Whole Class Instruction



Once students take the *i-Ready Diagnostic*, teachers can access their Instructional Groupings to support differentiation of whole class and small group instruction. Small groups in this context can focus on grade-level instruction, reteaching for struggling students, and extensions for advanced students.

Online Instruction



To assist with RTI Tier 1 instruction, each student is provided with an online learning path that focuses on domain-level instruction for 30–49 minutes per subject per week to support students in getting to grade-level proficiency.

Progress Monitoring



Global: The winter and spring Diagnostics assess students for progress against their results from the fall. In an RTI Tier 1 approach, educators typically conduct data reviews to determine if adjustments need to be made. Additional *i-Ready* reports for global progress monitoring include Diagnostic Growth reports.

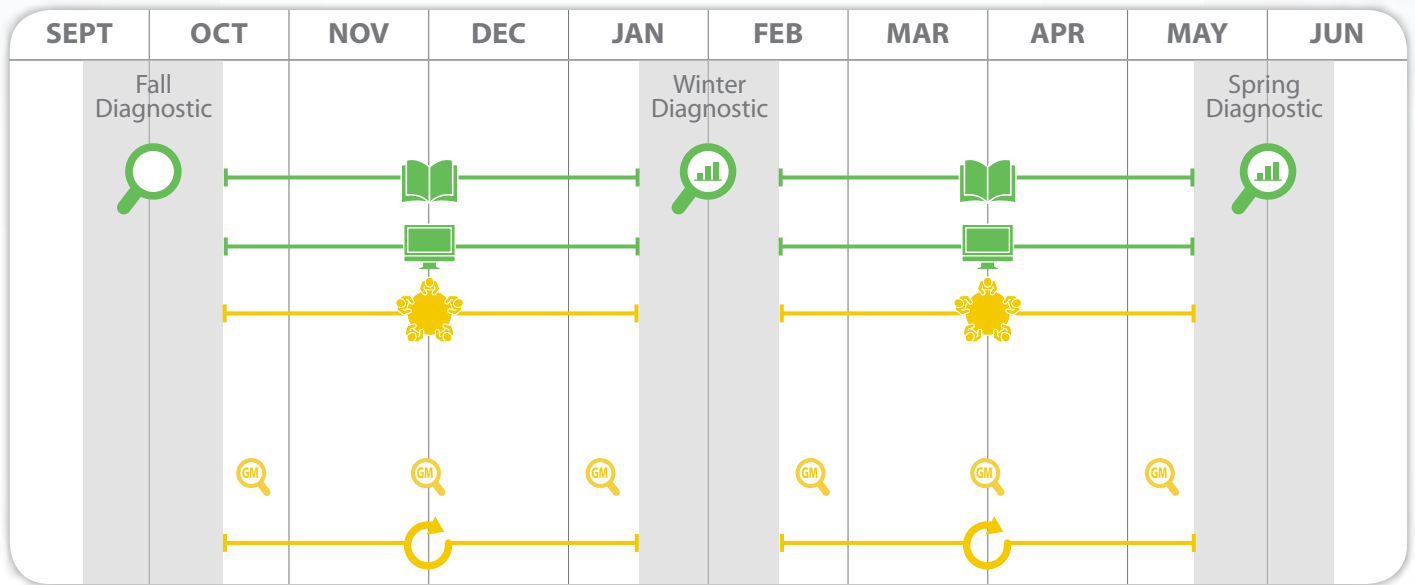


Ongoing: As students engage in weekly Online Instruction, *i-Ready* reports provide teachers with instant access to individualized student data from Lesson Quiz results. Along with *i-Ready* data, teachers typically use various forms of ongoing formative assessment to inform their instruction throughout the year.



Sample Implementation Calendar for RTI Tier 2

This is a sample RTI implementation calendar that may be appropriate for many districts' approaches to RTI. *i-Ready* offers flexibility so your district can build a program based on your specific accountability requirements and RTI needs.



In many districts, students who are eligible for RTI Tier 2 instruction receive RTI Tier 1 instruction, including universal RTI screening, differentiated whole class instruction, and Online Instruction. In addition, RTI Tier 2 instruction and monitoring can include:

Small Group Supplemental Instruction



RTI Tier 2 instruction involves moderately intensive interventions in the form of small group instruction. Instructional Groupings are instantly recommended based on *i-Ready Diagnostic* results. For groups of students with similar needs, specific Next Steps for Instruction are also identified. It is important to note that these Instructional Groupings are based on the specific skills students need to improve upon within a subject and domain(s).

Progress Monitoring



Global: After completing the *i-Ready Diagnostic*, educators may administer *i-Ready Growth Monitoring* assessments every six to eight weeks to determine if instructional adjustments need to be made. At least three data points (including the Diagnostic) are needed to fully evaluate if adjustments are necessary. Additional *i-Ready* reports for global progress monitoring include Diagnostic Growth reports and Growth Monitoring Results reports.

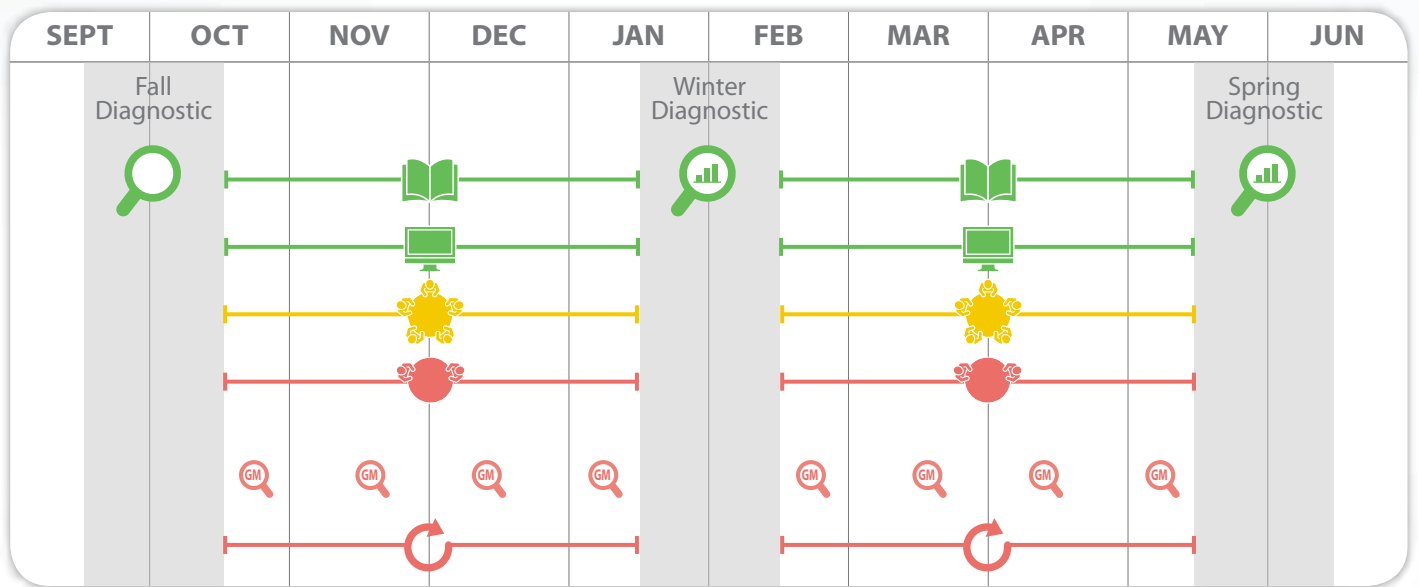


Ongoing: Teachers will also conduct ongoing progress monitoring to assess the mastery of smaller skills along the way as students work toward achieving their larger instructional goals. *i-Ready's* online Lesson Quizzes and student independent work can be used.



Sample Implementation Calendar for RTI Tier 3

This is a sample RTI implementation calendar that may be appropriate for many districts' approaches to RTI. *i-Ready* offers flexibility so your district can build a program based on your specific accountability requirements and RTI needs.



In many districts, students who are eligible for RTI Tier 3 instruction receive all RTI Tier 1 instruction, including universal RTI screening, differentiated whole class instruction, and Online Instruction as well as RTI Tier 2 supplemental support. In addition, RTI Tier 3 instruction and monitoring can include:

Intensive Support for One-on-One Instruction



The Diagnostic Results (Student) report indicates the student's Grade-Level Placement for each domain and is helpful in identifying the areas in which the student is performing below grade level and needs intensive remediation. *i-Ready* Tools for Instruction, a series of easy-to-use lesson plans that are part of the *i-Ready Diagnostic* reports, can be used by a teacher or an intervention specialist as targeted lessons for individual students.

Progress Monitoring



Global: *i-Ready* Growth Monitoring Assessments can be given as a monthly measure of global progress monitoring to determine if adjustments or mid-course corrections may be needed. *i-Ready* Growth Monitoring, a part of the *i-Ready Assessments* suite, is designed to be administered at most every 30 days in months when *i-Ready Diagnostic* is not completed by the student.



Ongoing: Teachers may conduct ongoing progress monitoring to assess the mastery of smaller skills along the way as students work toward achieving their larger instructional goals using *i-Ready's* online Lesson Quizzes and Checks for Understanding within the differentiated Tools for Instruction small group lessons. In addition, teachers typically include classroom Mid-Unit and End-of-Unit Assessment, Exit Tickets, and student independent work to monitor student progress toward proficiency.



“ I love i-Ready! *The reports help me see exactly what areas my students are struggling in so I can be very specific with what I need to address in interventions.* ”

—Fourth Grade Teacher, UT

“ The suggestions for instruction are invaluable. *By using the information from the Diagnostic, my instruction for students focuses on [their] specific needs. Thank you for helping me help my students achieve!* ”

—Fifth Grade Teacher, MD

“ i-Ready is the answer to my data questions. *The teachers at my school are digging in and becoming ‘data-wise.’ We love the Growth Monitoring and Diagnostic. Kids are aware of their progress and graphing their growth. I love you, i-Ready!* ”

—Instructional Coach, NM



i-Ready received high ratings from the National Center on Intensive Intervention (NCII).

